

Optimum™ Mortice Lock, 4-Point

Apex Mini-Lever Set

INTERLOCK™
ASSA ABLOY

ASSA ABLOY, the global leader
in door opening solutions.

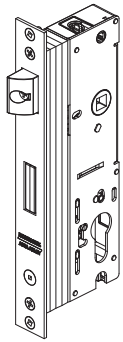
Installation Instructions

Application: Provides secure deadlocking for aluminium or timber hinged doors.

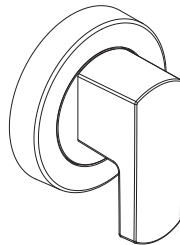
Tools Required:

- Drill
- 2.9mm Drill Bit
- 3.2mm Drill Bit
- 20mm Drill Bit
- Square Screwdriver #1

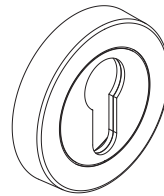
Pack Contents:



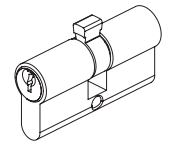
4-Point Lock



Mini-Lever (x 2)

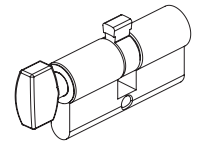


Cylinder Escutcheon (x 2)

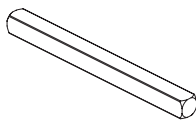


Cylinder Double Key

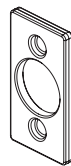
or



Cylinder Key & Turnknob



92mm Drive Bar (Spindle)



2mm Latch Packer



Shootbolt Rod
1.3m



Shootbolt Rod
1m



Steel 'D' Tip

or



Plastic 'D' Tip



M5 Cylinder Fixing Screw



6g x 16mm Screws (x 16)



8g x 7.5mm Screws (x 2)



Latch Wear Pad



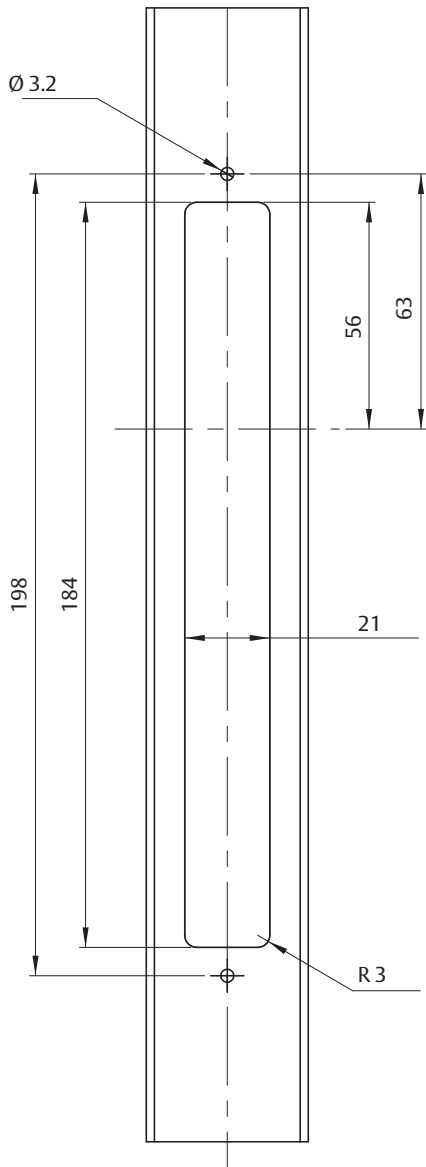
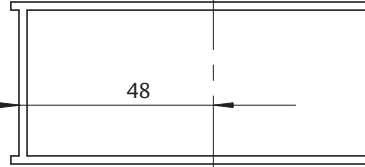
Steel Rod Tip Pin

1. Door Preparation

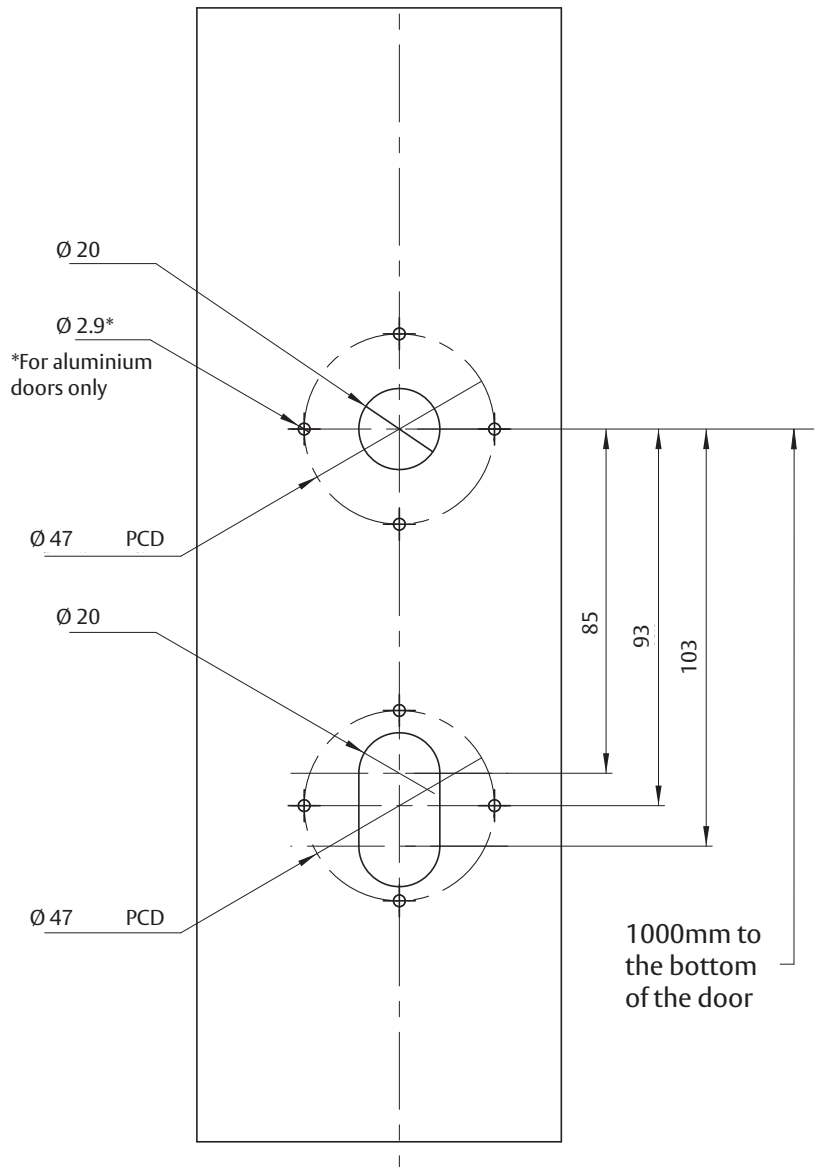
Route the door as shown in the routing diagram.

50mm Backset Routing is 48mm from Face

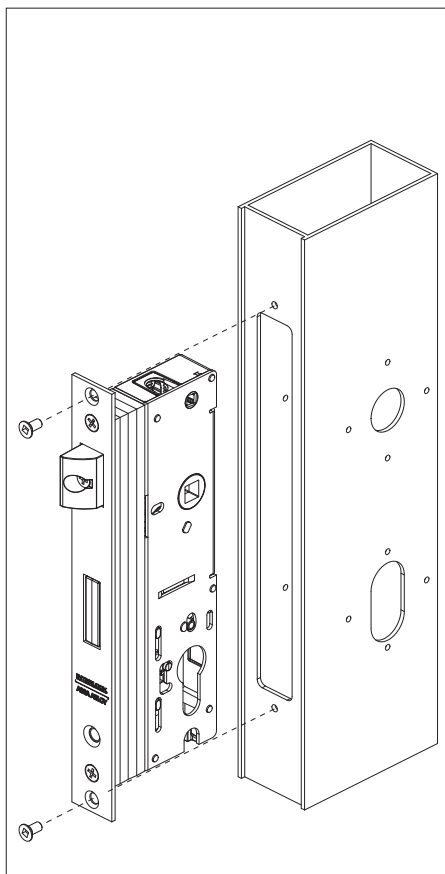
Top View of Stile



Front View of Stile

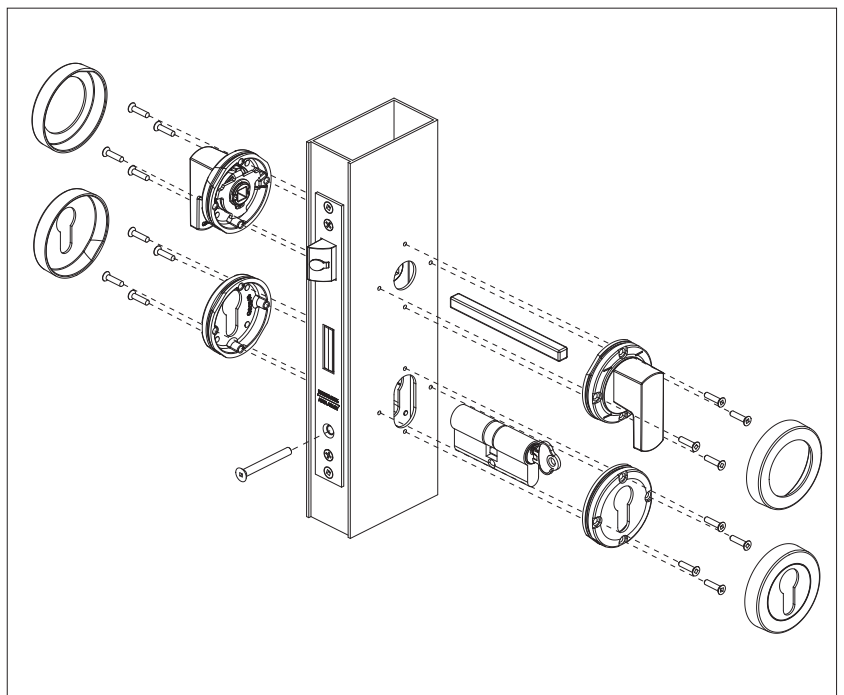


Side View of Stile



2. Fixing Lock

- Place the lock assembly into the stile
- Fix the lock onto the stile using the two 8g x 7.5mm screws



3. Fixing Furniture and Cylinder

- Insert the drive bar (spindle) through the square drive hole in the lock
- Place the mini-lever furniture onto the drive bar. Fix internal rose to stile using four 6g x 16mm screws. Repeat on external side of the stile
- Place the cylinder through the cylinder hole
- Fix cylinder using the M5 cylinder fixing screw as supplied
- Place the euro escutcheon rose over the cylinder and fix to stile using four 6g x 16mm screws. Repeat for external rose
- Place covers over mini-lever and cylinder rose

4. Assembly of Shootbolt Rod Ends

Trim the lock rods to length allowing for:

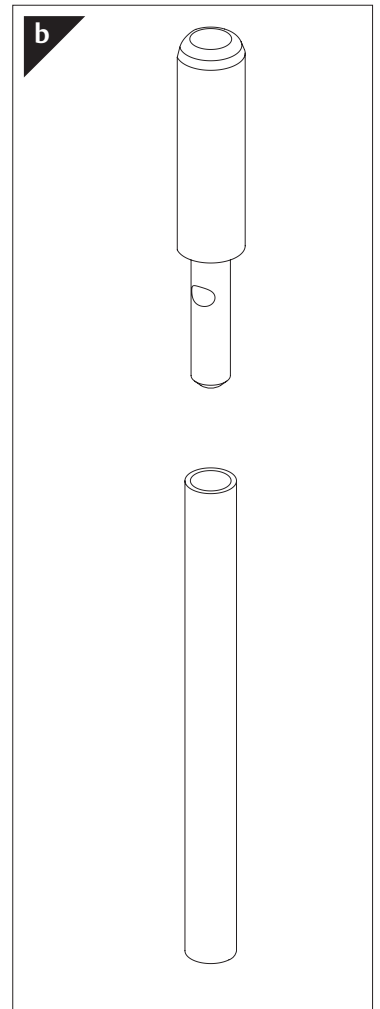
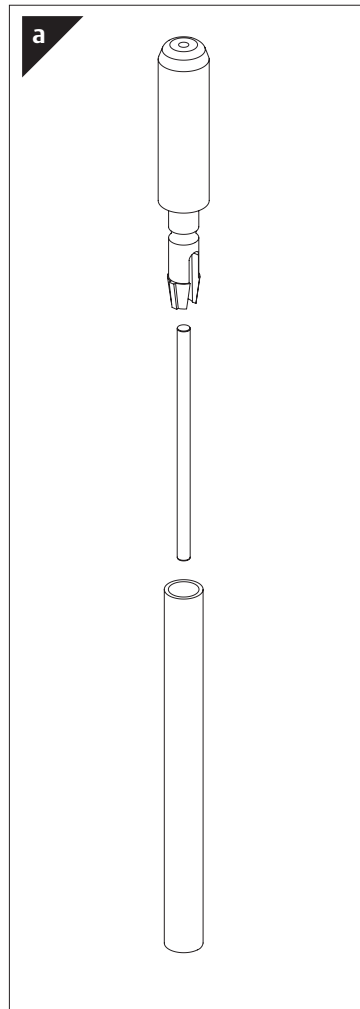
- A throw of 18mm
- Length of 'D' tip 44mm
- Engagement into lock racks of 11mm

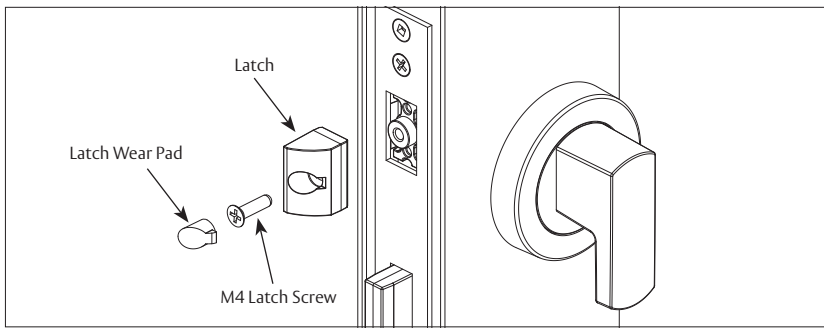
a) Plastic Rod Ends

- a1) Insert the steel pin into the plastic 'D' tip. The steel pin should be inserted from the open end rather than the smaller drainage hole
- a2) Insert the combined part into the top of the shootbolt rod
- a3) Crimp the shootbolt rod, by applying pressure on the shootbolt rod in line with the groove around the 'D' tip to ensure the two parts cannot be easily separated. A tool is available for this purpose (P84042)
- a4) Repeat steps a1-a3 again for the bottom shootbolt rod
- a5) Insert the rods from the top and bottom of the stile and screw into the lock

b) Stainless Steel Rod Ends

- b1) Insert the supplied stainless steel 'D' tips into the top of the shootbolt rod
- b2) Crimp the shootbolt rod, by applying pressure on the shootbolt rods in line with the groove around the 'D' tip shank to ensure the two parts cannot be easily separated. A tool is available for this purpose (P84042)
- b3) Repeat steps b1-b2 again for the bottom shootbolt rod
- b4) Insert the rods from the top and bottom of the stile and screw into the lock

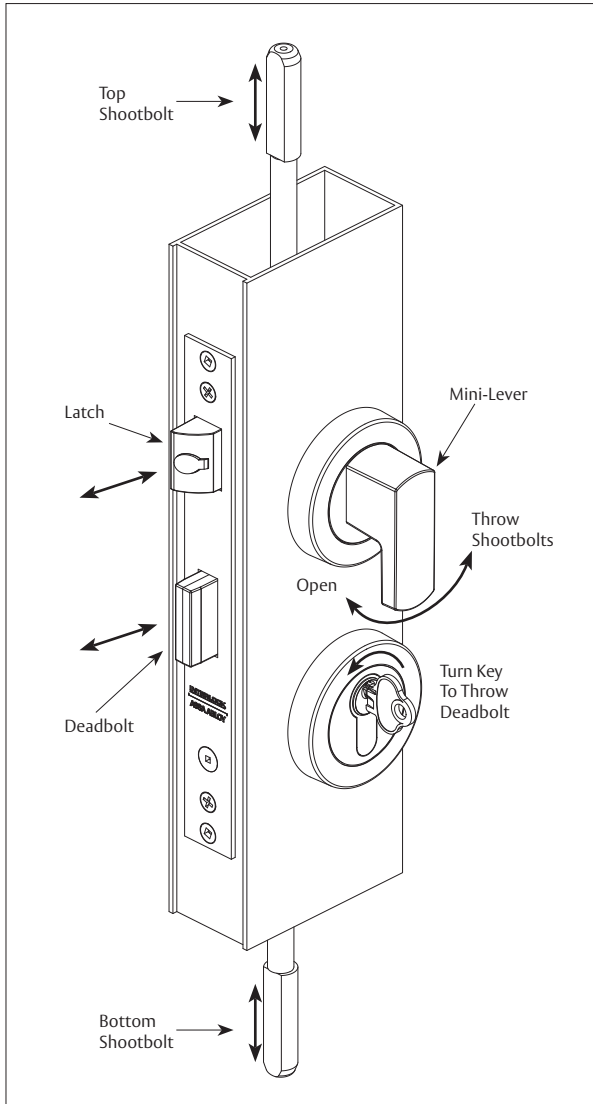




5. Latch Reversal

- Undo the M4 latch screw
- Reverse the latch as desired
- Replace the M4 latch screw to secure the latch
- Insert the latch wear pad

Note: 2mm Latch Packer is provided to allow for latch projection adjustment. An additional 2mm packer is available for purchase.



6. Lock Operation

Deadlocking Operation

- Pull the door shut. The door will self-latch
- Turn the key towards the edge of the door to deadlock
- The door is now secure from exterior and interior

Shootbolt Operation

- Turn the bottom of the mini-lever away from the frame to engage the shootbolts (either when door is unlocked or locked)
- To retract the shootbolts ensure door is unlocked. Turn the bottom of the mini-lever towards the frame and release

Opening Operation

- Turn the key away from the door edge to deactivate the deadlock
- Turn the bottom of the mini-lever towards from the frame to retract the latch

Troubleshooting	
Do I need to tap holes?	No. All screws are self tapping.
The key function does not operate.	Ensure the motion of the latch is not restricted. Ensure the shootbolts are either fully engaged or fully retracted.

INTERLOCK WARRANTY

ASSA ABLOY New Zealand Ltd ("ASSA ABLOY") guarantees its Interlock products against defects in workmanship and materials.

If within 10 years of purchase a product is found to be defective, ASSA ABLOY will supply the same or equivalent product free of charge.

All electrical and electronic components used in ASSA ABLOY's range of products excluding batteries are guaranteed for a period of 12 months from the date of proof of purchase, unless stated otherwise.

ASSA ABLOY assumes no liability under the guarantee for the following:

1. Improper installation or failure to follow fitting instructions.
2. Failure due to improper maintenance.
3. Fair wear and tear.
4. Indirect or consequential loss or damage.
5. Cost of removal and/or replacement.
6. Cost of freight and/or travelling time.
7. Damage to or deterioration of plated finishes (soft finishes). As deterioration is possible under some environmental conditions, these finishes are excluded from this guarantee.
8. Any modification or repairs to a product, as supplied, unless authorised by ASSA ABLOY.
9. Use of replacement parts other than authorised parts.
10. Malfunction or failure of the product due to the use of non-genuine ASSA ABLOY parts.

Nothing in the ASSA ABLOY New Zealand Limited Warranty excludes, restricts or modifies any condition, warranty, right or liability implied or protected by law where to do so would render the Warranty, or any part of it, void.

10
YEAR
WARRANTY

